

# CTV CenTraVac™ CVHF/CVHG Water-Cooled Chiller





## CTV CenTraVac™ CVHF/CVHG Water-Cooled Chiller



**Cooling capacity: 1220-6120 kW**

**Heating capacity: -----**

- Direct drive multistage compressors
- Semi-hermetic compressor design
- Rapid restart after power failure
- Economizer
- Tracer AdaptiView™ Controls

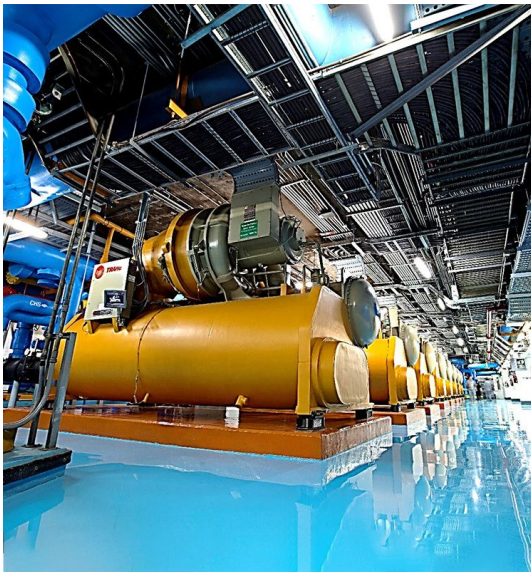


## A leader from the start

CenTraVac™ chillers are part of the EcoWise™ portfolio of products that are designed to lower environmental impact with next-generation, low global warming potential (GWP) refrigerants and high-efficiency operation.

Trane has been the leader in chiller innovation since 1938. Throughout its long history, CenTraVac™ technology has advanced to meet a variety of challenges, and continues to lead the industry into the next generation of cooling.

Trane CenTraVac™ centrifugal chillers provide the lowest possible cooling costs, while delivering significant environmental benefits.



## Most reliable

For the last 80 years, Trane has been building centrifugal chillers with design fundamentals and proven technology. Trane centrifugal compressors achieve the industry's highest design reliability rating of 99.7 percent:

- Unmatched direct drive compressor reliability through simplicity of design and fewer moving parts
- Semi-hermetically sealed motors operate in a cool, clean environment to extend the life of the chiller
- Tracer AdaptiView™ controller with patented algorithms anticipate and correct situations to keep the chiller online
- Extensive factory testing available to verify operation at customer-defined conditions



## Environmental Stewardship

- Next generation HFO R514A, with <2 GWP, with no ozone depletion, an atmospheric lifetime of 20 days.
- Low pressure refrigerants operate in a vacuum, which virtually eliminates leaks and enables near-zero emissions throughout the chiller operational life
- Energy saving options reduce water and heating plant consumption: free cooling, thermal storage, heat recovery, heat pump and Adaptive Frequency™ drives

## Range description

- As with all CenTraVac™ chillers, selection options result in a unit built to customer specifications. From energy saving options to the enhanced electrical package to a variety of low and medium voltage options, Trane CenTraVac chillers can be fully customized.

## Technical specifications

<b>Cooling capacity</b>	1220-6120 kW
<b>Heating capacity</b>	-----
<b>Eurovent certification</b>	
<b>ErP Certification</b>	
<b>Refrigerants</b>	
<b>Operating mode</b>	Cooling only
<b>Energy saving</b>	----
<b>Compressor</b>	Centrifugal



## Improve Operations

Technology is continuously evolving and Trane Engineering is ahead of the curve in bringing innovation into product development. Our sustainable solutions deliver enhancements to the Trane installed base to make your chillers and heat pumps even "better than before". That's Trane Building Advantage - TBA.

## Trane Rental Services

Cooling and heating are services, not products. A process or a building does not need a chiller or a boiler sitting on a roof, but a reliable and efficiency supply of cold or hot water, cold or warm air. This is the essence of what we do at Trane Rental Services. Let us take care of it for you.



**Read more <https://trane.eu/rental>**

Trane has a policy of continuous product and product data improvement and reserves the right to change design and specifications without notice.



Trane – by Trane Technologies (NYSE: TT), a global climate innovator – creates comfortable, energy efficient indoor environments through a broad portfolio of heating, ventilating and air conditioning systems and controls, services, parts and supply. For more information, please visit [trane.eu](https://trane.eu) or [tranetechnologies.com](https://tranetechnologies.com).